















ACCESSORIES

	Mounting Rail	219
	End Clamp	220
	Group Marker Holder	221
	Mounting Brackets / Spacer	222
	Mounting Handle / Mounting Base	223
	Marking Tags	224
	Warning Labels / Test Plugs	225
	Marker Plotter System	227 - 228
	Screw Clamp Terminal Block Shorting Links	229 - 232
	Melamine Terminal Block Shorting Links	233 - 234
	Stud Type Terminal Block Shorting Links	233 - 234
	CX, CSC, CY, AS Series Terminal Shorting Links	235
	End Plates	236
	Partition & Separator Plates	237
	Professional Tools	238 - 240
	Sockets & Switches	241 - 242

NEUTRAL / EARTH CLAMPS

The CENC series clamps are a flexible solution for terminating neutral and grounding wires on bus bar.

The NEB10 (10 x 3mm) and NEB6 (6 x 6mm) bus bar can either be panel mounted using Plastic supports NES or Din rail mounted using the end clamp CA202.

CENC4



Width (Thickness) x Length	7.5 x 23.3 mm			
Height with DIN 35 x 7.5 / 35 x 15 / 32 mm Rail				
Connection Possibility as per	IEC	UL - CSA		
With 1 Conductor per clamp	Stranded / Flexible	10.0 mm ²	22 - 12 AWG	
	Solid with Ferrule / Lug	10.0 mm ²	22 - 10 AWG	
With 2 same size Conductors per clamp	Stranded / Flexible	4.0 mm ²	22 - 14 AWG	
	with TWIN Ferrule / Lug	4.0 mm ²	22 - 14 AWG	
Wire Stripping Length	12 mm			
Ratings As Per	IEC60947-2	UL-1059	CSA22.2-158	
Voltage	800 V			
Current	57 A			
Torque	0.8 Nm	14 lb-in	14 lb-in	
Approvals				
Insulation Material / Material Group	Polyamide 6,6 / 1			
Rated Impulse Voltage / Pollution Degree	8 KV / 3			
	Type / Cat. No.	Standard Pack		
Terminal Block	Green	CENC4	50	
	Blue	CENC4BU	50	
	Black	CENC4BK	50	
	Grey	CENC4G	50	
Bus Bar 6 (H) x 6 (W) mm		NEB6	I _{max} : 140 A	10
Bus Bar 10(H) x 3 (W) mm		NEB10	I _{max} : 120 A	10
Plastic support with fixing screw		NES		50
Bus Bar Support for DIN 35 Rail Mounting		CA202		50
Marking Tags (Refer Pg. 224 for details)		CA509/K5WHT		100
Screw Driver		SCS0.8/4	Blade size: 0.8 x 4 mm	10

Note:
The current carrying capacity of the busbar (140A) should be taken into account while connecting loads.

PANEL & RAIL MOUNTING ASSEMBLY OF CENC CLAMPS



CENC16



9.8 x 23.3 mm

CENC35



14.5 x 27.3 mm

IEC	UL - CSA
10.0 - 16.0 mm ²	10 - 6 AWG
10.0 - 16.0 mm ²	10 - 6 AWG
6.0 - 10.0 mm ²	10 - 4 AWG
6.0 - 10.0 mm ²	10 - 4 AWG

16 mm

IEC60947-7-2 UL-1059 CSA22.2-158

800 V

76 A

2.0 Nm 17.5 lb-in 14 lb-in



Polyamide 6,6 / 1

8 KV / 3

Type / Cat. No.	Standard Pack
CENC16	50
CENC16BU	50
CENC16BK	50
CENC16G	50

NEB6	Imax.: 140 A	10
NEB10	Imax.: 120 A	10

NES 50

CA202 50

CA509/K6WHT 100

SCS1.0/5.5 Blade size: 1.0 x 5.5 mm 10

IEC	UL - CSA
10.0 - 35.0 mm ²	8 - 2 AWG
10.0 - 35.0 mm ²	8 - 2 AWG
10.0 - 25.0 mm ²	8 - 4 AWG
10.0 - 25.0 mm ²	8 - 4 AWG

16 mm

IEC60947-7-2 UL-1059 CSA22.2-158

800 V

125 A

2.5 Nm 25 lb-in 25 lb-in



Polyamide 6,6 / 1

8 KV / 3

Type / Cat. No.	Standard Pack
CENC35	50
CENC35BU	50
CENC35BK	50
CENC35G	50

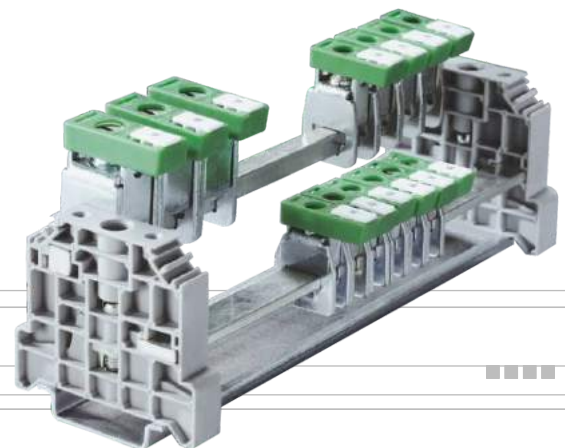
NEB6	Imax.: 140 A	10
NEB10	Imax.: 120 A	10

NES 50

CA202 50

CA509/K6WHT 100

SCS1.0/5.5 Blade size: 1.0 x 5.5 mm 10



SCREW TYPE SHIELD CONNECTION CLAMPS

The screw type Shield connection clamps are with Knurled Screw and suitable for mounting on 10 x 3 mm Busbar. These clamps can be easily used with the holder NES or NESCC.



Type of Mounting

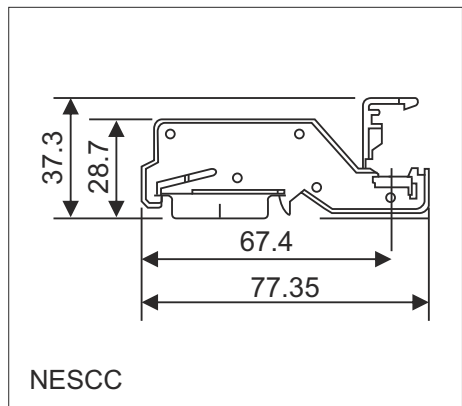
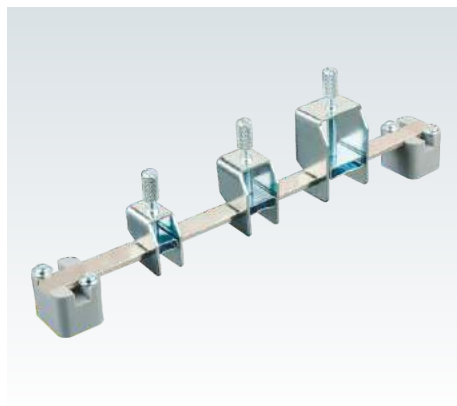
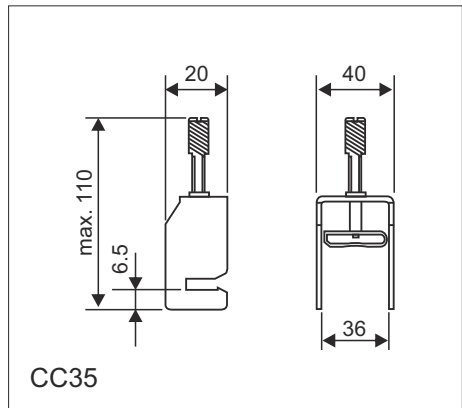
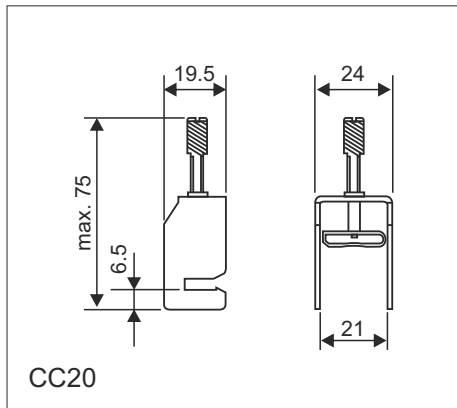
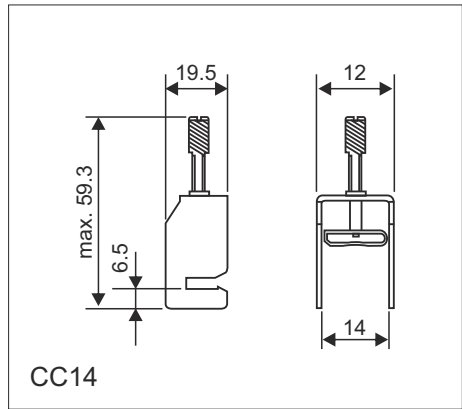
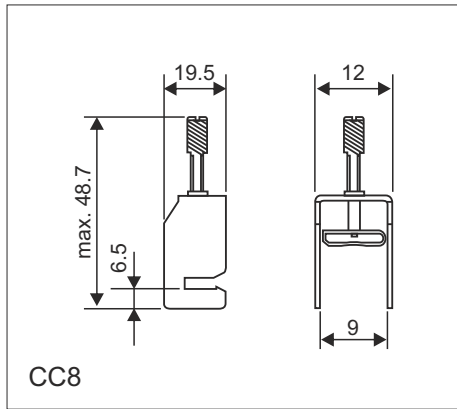
Bus bar mounting screw type shield connectors

Shield connection clamps for Busbar 10 X 3 mm	
Ø8 mm, tightening torque 0.6 Nm	
Ø14 mm, tightening torque 0.8 Nm	
Ø20 mm, tightening torque 0.8 Nm	
Ø35 mm, tightening torque 1.5 Nm	

Type / Cat. No.	Standard Pack
CC8	10
CC14	10
CC20	10
CC35	10

Busbar 10(H) X 3(W) mm	NEB10	I _{max} : 120A	10
Mounting Support (Panel Mount)	NES		50
Mounting Support (Din 35 Rail Mounting)	NESCC		20

Busbar 10(H) X 3(W) mm	NEB10	I _{max} : 120A	10
Mounting Support (Panel Mount)	NES		50
Mounting Support (Din 35 Rail Mounting)	NESCC		20



SPRING TYPE SHIELD CONNECTION CLAMPS

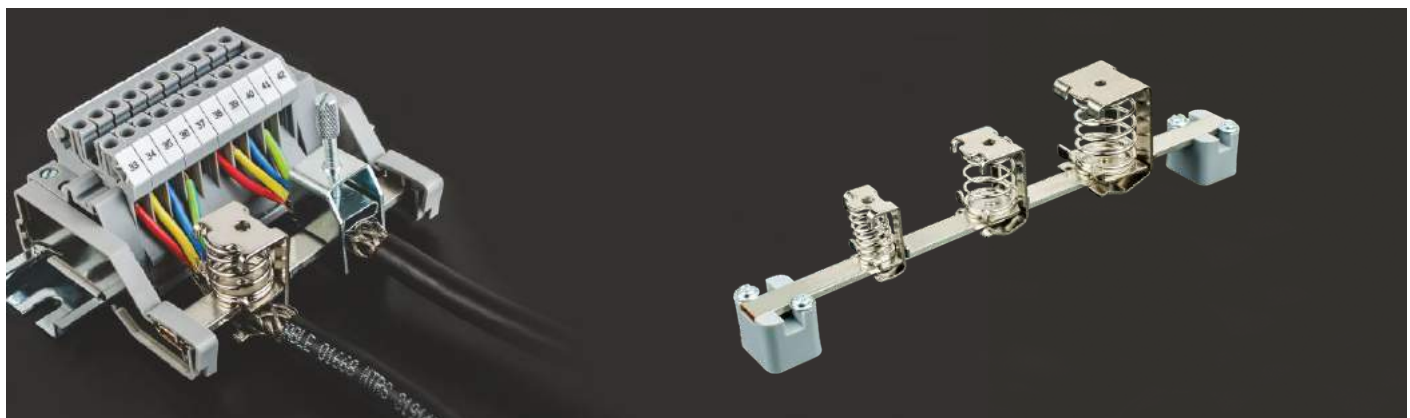
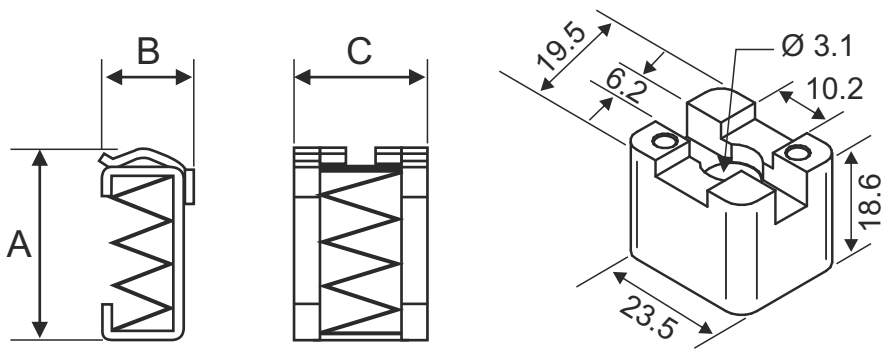
The electromagnetic compatibility of electrical machines and installations has become a very important aspect, our Spring shield connection clamps CCS series offer wide range for cable and conductors from diameters 2 to 32 mm.



Type of Mounting Bus bar mounting spring type shield connectors

Shield connection clamps for Busbar 10 X 3 mm		Type / Cat. No.	Standard Pack
	Ø 2 - 6 mm	CCS2X2-6	10
	Ø 3 - 8 mm	CCS3-8	10
	Ø 4 - 13.5 mm	CCS4 -13.5	10
	Ø 10 - 20 mm	CCS10-20	10
	Ø 15 - 32 mm	CCS15-32	10
Busbar 10(H) X 3(W) mm		NEB10 I _{max} : 120A	10
Mounting Support (Panel Mount)		NES	50
Mounting Support (Din 35 Rail Mounting)		NESCC	20

Part No.	A	B	C
CCS 2X2 - 6	24	15	18.20
CCS 3 - 8	25.50	13.6	18.30
CCS 4 - 13.5	31	19.10	19.70
CCS 10 - 20	38.70	24.60	26.10
CCS 15 - 32	62.20	37.60	32.00

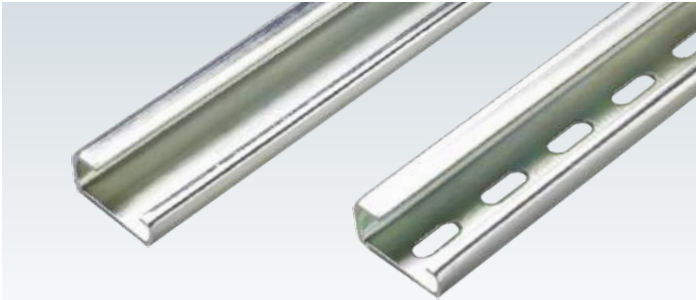


MOUNTING RAILS

Most of Connectwell's Terminal Blocks and Interface Modules are designed to be mounted on DIN Rails (Channels) that can be fixed easily on panel boards and other equipment.

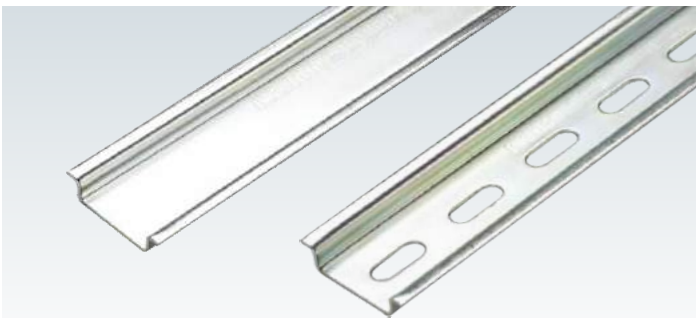
Connectwell offers three types of steel mounting rails: Din 32, Din 35 and Din 15 that comply with European standards **EN 50 0035**, **EN 50 022** and **EN 50 045** respectively. The rails are zinc plated and chromate passivated. According to the **DIN VDE 0611** part 3, steel mounting rails are permissible as grounding bus bars (**PE** function) but do not have the **PEN** function.

All mounting rails are available in standard 1m and 2 m lengths. Cut to length mounting rails with holes / slots as per customer requirement are also available on request.



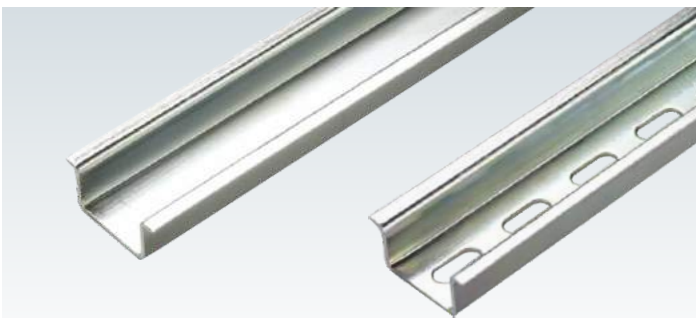
Din 32 Rail [Din 1] (32 x 15 x 1.5 mm)

Part No.	Length/Type	Standard Pack
CA501-1M	1 m, unslotted	25 m
CA501-1M-S	1 m, slotted	25 m
CA501-2M	2 m, unslotted	50 m
CA501-2M-S	2 m, slotted	50 m



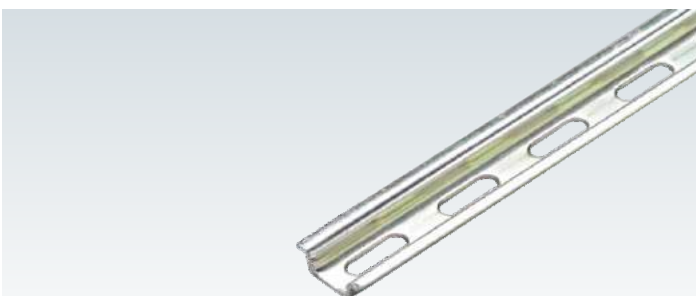
Din 35 Rail [Din 3] (35 x 7.5 x 1.0 mm)

Part No.	Length/Type	Standard Pack
CA701-1M	1 m, unslotted	50 m
CA701-1M-S	1 m, slotted	50 m
CA701-2M	2 m, unslotted	50 m
CA701-2M-S	2 m, slotted	50 m



Din 35-15 Rail [Din 1] (35 x 15 x 1.5 mm)

Part No.	Length/Type	Standard Pack
CA701-15-1M	1 m, unslotted	25 m
CA701-15-1M-S	1 m, slotted	25 m
CA701-15-2M	2 m, unslotted	50 m
CA701-15-2M-S	2 m, slotted	50 m



Din 15 Rail [Din 2] (15 x 5 x 1.0 mm)

Part No.	Length/Type	Standard Pack
CA601-1M	1 m, slotted	200 m

END CLAMPS

End Clamps help to secure the entire Terminal Block assembly on the DIN Rail. End Clamps should be fixed on both sides of the Terminal Block assemblies. These End Clamps are designed to fix on DIN 32, DIN 35 and DIN 15 rails. The Polyamide series End Clamps have suitable recesses to accommodate a group marker holder and marking tags for group identification. The steel parts are Zinc plated and Chromate passivated. The CA102 and CA202 are large End Clamps for heavy duty applications. CA103 is a screwless End Clamp which can be snapped on to the Din Rail.

CA702			CA102			CA802		
								
Width (Thickness) x Length	9 x 45 mm		Width (Thickness) x Length	9 x 46 mm		Width (Thickness) x Length	8 x 45 mm	
Height with DIN 35 x 7.5 mm Rail	35.75 mm		Height with DIN 35 x 7.5 mm Rail	51.40 mm		Height with DIN 35 x 7.5 mm Rail	31.30 mm	
Height with DIN 35 x 15 mm Rail	43.30 mm		Height with DIN 35 x 15 mm Rail	58.90 mm		Height with DIN 35 x 15 mm Rail	38.80 mm	
Height with DIN 32 mm Rail	36.85 mm		Height with DIN 32 mm Rail	52.50 mm				
Material	Polyamide 66		Material	Polyamide 66		Material	Polyamide 66	
Part No.	Suitable For	Std. Pack	Part No.	Suitable For	Std. Pack	Part No.	Suitable For	Std. Pack
CA702	DIN 32 / DIN 35 / DIN 35-15 Rail	50	CA102	DIN 32 / DIN 35 / DIN 35-15 Rail	50	CA802	DIN 35 / DIN 35-15 Rail	50
CA202			CA103			CA104		
								
Width (Thickness) x Length	9.5 x 50 mm		Width (Thickness) x Length	6 x 41 mm		Width (Thickness) x Length	10 x 41 mm	
Height with DIN 35 x 7.5 mm Rail	48.50 mm		Height with DIN 35 x 7.5 mm Rail	36.10 mm		Height with DIN 35 x 7.5 mm Rail	36.10 mm	
Height with DIN 35 x 15 mm Rail	55.80 mm		Height with DIN 35 x 15 mm Rail	43.25 mm		Height with DIN 35 x 15 mm Rail	43.25 mm	
Material	Polyamide 66		Material	Polyamide 66		Material	Polyamide 66	
Part No.	Suitable For	Std. Pack	Part No.	Suitable For	Std. Pack	Part No.	Suitable For	Std. Pack
CA202	DIN 35 / DIN 35-15 Rail	25	CA103	DIN 35 / DIN 35-15 Rail	50	CA104	DIN 35 / DIN 35-15 Rail	50
CA602			CA302 / CA402			CA502		
								
Width (Thickness) x Length	8 x 28 mm		Width (Thickness) x Length	16 x 27 mm		Width (Thickness) x Length	11.5 x 22.5 mm	
Height with DIN 15 mm Rail	21.60 mm		Height with DIN 35 x 7.5 mm Rail	29.00 mm		Height with DIN 32 mm Rail	29.20 mm	
Height with DIN 35 x 15 mm Rail			Height with DIN 35 x 15 mm Rail	37.50 mm				
Material	Polyamide 66		Material	Steel		Material	Steel	
Part No.	Suitable For	Std. Pack	Part No.	Suitable For	Std. Pack	Part No.	Suitable For	Std. Pack
CA602	DIN 15 Rail	50	CA302	DIN 35 Rail	50	CA502	DIN 32 Rail	50
			CA402	DIN 35-15 Rail	50			

GROUP MARKER HOLDER

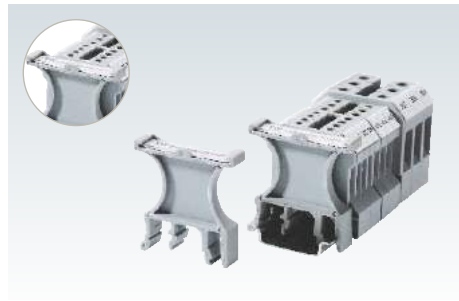
Two variants of Group Marker Holders are available for identification of Terminal Block assemblies:

GMH1, GMH2, GMH3, GMH4, GMH5 and **GMH8** are to be mounted in the grooves of End Clamps.

CA509/G1 marking tag can be used with these marker holders or can be directly mounted on the end clamp.

GMH6 & GMH7 can be mounted directly on Din Rails. A sticker / paper needs to be inserted in the slot which is covered by a transparent plastic sheet.

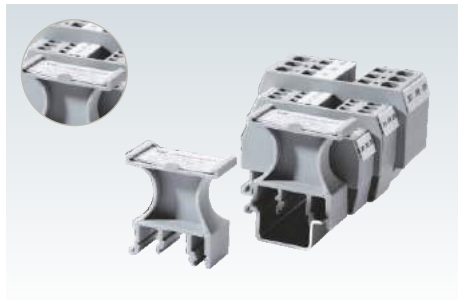
GMH6



Height x Length x Thickness (mm)	46.5 x 44.5 x 9.5
Material	Polyamide 66

Part No.	Suitable For	Std. Pack
GMH6	DIN 32 / DIN 35 / DIN 35-15 Rail	50

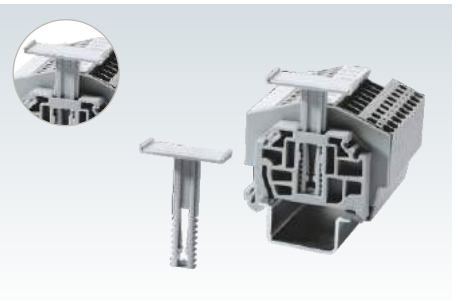
GMH7



Height x Length x Thickness (mm)	46.5 x 44.5 x 19.5
Material	Polyamide 66

Part No.	Suitable For	Std. Pack
GMH7	DIN 32 / DIN 35 / DIN 35-15 Rail	50

GMH8 / GMH8N



Height x Length x Thickness (mm) GMH8	44.65 x 31.10 x 10 mm
Height x Length x Thickness (mm) GMH8N	44.65 x 31.10 x 6 mm
Material	Polyamide 66

Part No.	Suitable For	Std. Pack
GMH8	CA103 / CA104	100
GMH8N	CA103 / CA104	100

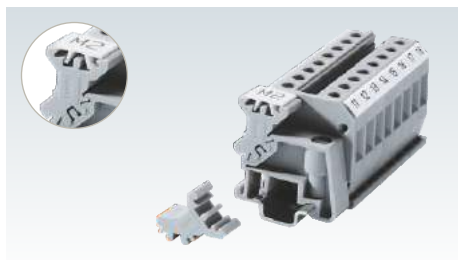
CA509/G1 & CA509/G2



Material	Polyamide 66
Mountable on all End Clamps	

Part No.	Dimension (H x L x T)	Std. Pack	Tags
CA509/G1	4.3 x 34 x 17.8 mm	1 Pkt	100
CA509/G2	4.3 x 34 x 8 mm	1 Pkt	100

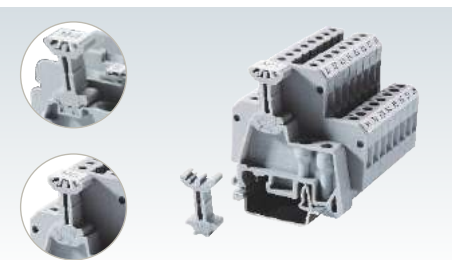
GMH1



Height x Length x Thickness	15.8 x 14.6 x 8 mm
Material	Polyamide 66

Part No.	Suitable For	Std. Pack
GMH1	CA602	100

GMH2 / GMH3



Height x Length x Thickness GMH2	23.2 x 14 x 8 mm
Height x Length x Thickness GMH3	23 x 14 x 8 mm
Material	Polyamide 66

Part No.	Suitable For	Std. Pack
GMH2	CA702	100
GMH3	CA802	100

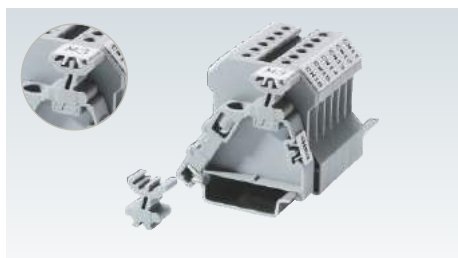
TM3.5 / TM5



TM3.5 (Height x Length x Thickness)	34 x 17.8 x 3.5 mm
TM5 (Height x Length x Thickness)	38 x 17 x 5 mm
Material	Polyamide 66

Part No.	Suitable For	Std. Pack
TM3.5	CPDL Series Terminals	50
TM5	CXDL Series Terminals	50

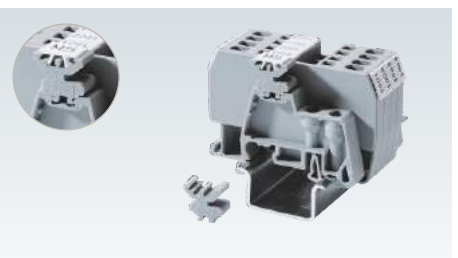
GMH4



Height x Length x Thickness	16.2 x 14 x 8 mm
Material	Polyamide 66

Part No.	Suitable For	Std. Pack
GMH4	CA802	100

GMH5



Height x Length x Thickness	13.7 x 14 x 8 mm
Material	Polyamide 66

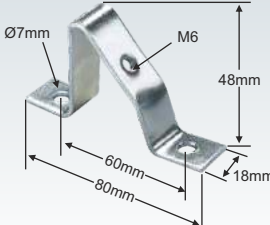
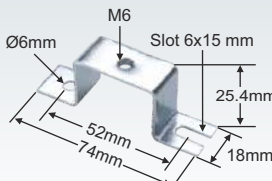
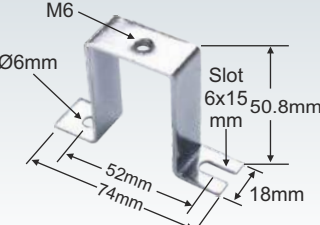
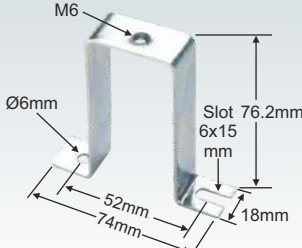
Part No.	Suitable For	Std. Pack
GMH5	CA702	100

MOUNTING BRACKETS

These are used for better access and increased clearance from the surface of the panel. These brackets are made of mild steel with zinc plating & chromate passivation.

CA603 - Can be used to install mounting rails at an angle of 45° to the panel surface.


CA703 / CA803 / CA903 - Are used for fixing mounting rails at different heights.

							
Part No. CA603	Std. Pack 25	Part No. CA703	Std. Pack 25	Part No. CA803	Std. Pack 25	Part No. CA903	Std. Pack 25

SPACER

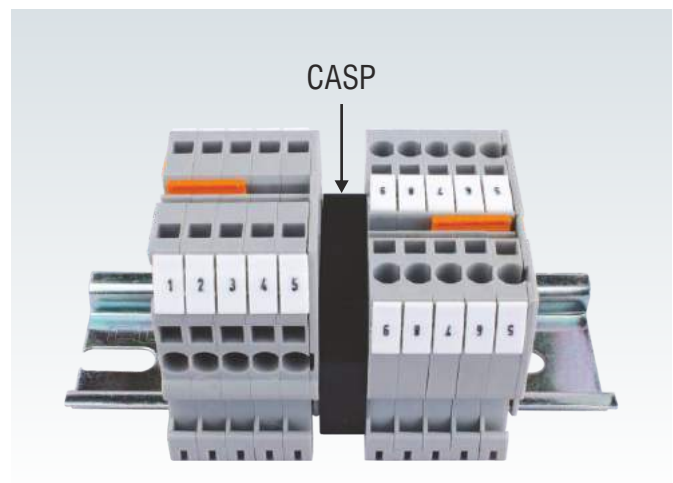
CASP can be used to increase the creepage and clearance distance between the Terminal Blocks and to segregate the different groups of Terminal Blocks.

CDL4USP can be stacked with the **CDL4U(O)** Terminal Block to create a housing for discrete components or small electronic circuits. Similarly CDL4UNSP fits the CDL4UN Terminal Block. The stacked housing can be fitted with an end plate to create a 'touch-proof' housing.



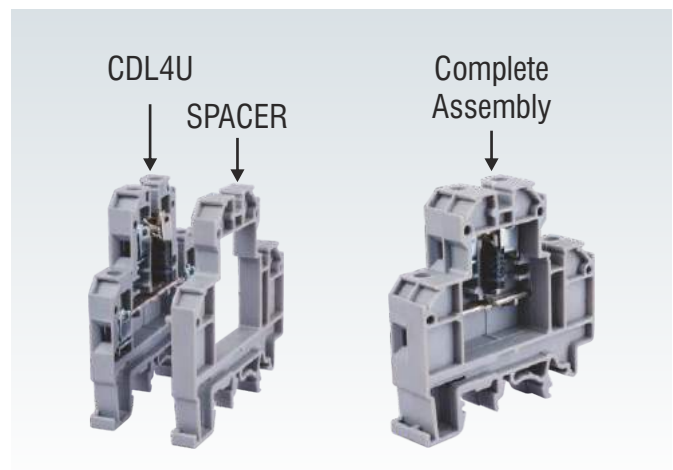
Width (Thickness) x Length	8 x 45 mm
Height with DIN 35 x 7.5 mm Rail	30.50 mm
Height with DIN 35 x 15 mm Rail	38.10 mm
Height with DIN 32 mm Rail	35.45 mm
Material	Polyamide 66

Part No.	Suitable For	Std. Pack
CASP	DIN 32 / DIN 35 / DIN 35-15 Rail	50




Material	Polyamide 66		
----------	--------------	--	--

Part No.	Suitable For	Dimension (T x L x H)	Std. Pack
CDL4USP	CDL4U	54 x 55.5 x 6 mm	50
CDL4UNSP	CDL4UN	57 x 58 x 6 mm	50



MOUNTING HANDLE

The Mounting Handle is used for easy and quick mounting of 10 Terminal Blocks on a Din Rail. The Terminal Blocks can be lifted from the packaging box with the help of this tool.

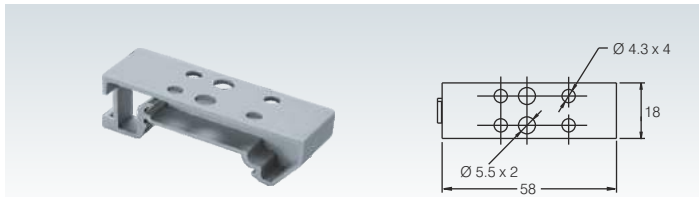


Part No.	Suitable for	Standard Pack
MH2.5	CTS2.5UN	1
MH4	CTS2.5UE / CTS4UN	1



MOUNTING BASE

CMTB35 is used to assemble components on a Din Rail. The mounting base has 4 holes of Ø4.3mm and 2 holes of Ø5.5mm. CA902 can be used to fasten Din 15 Rail on to the Din 32 Rail.



Part No.	Suitable for	Standard Pack
CMTB35	Din 35 rail mounting	50

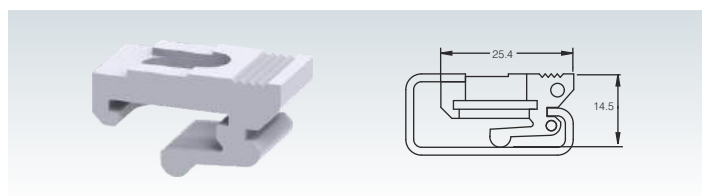


SPRING CLAMP ACTUATOR TOOL

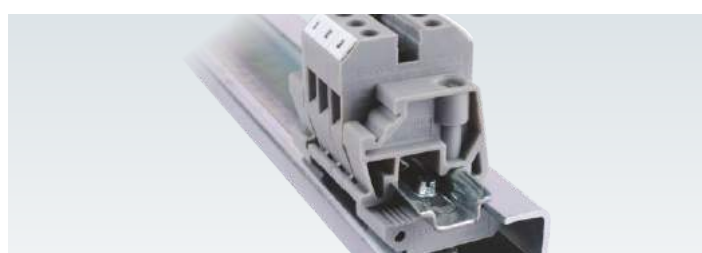
The spring clamp actuator tool can actuate two adjacent springs thereby facilitating rapid wiring.



Part No.	Suitable for	Standard Pack
SCA2.5	CX2.5, CXDL2.5, CM2.5S, CXM2.5, CSCP2.5 Series Terminals	1



Part No.	Suitable for	Standard Pack
CA902	Din 32 rail mounting	50

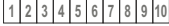



MARKING TAGS

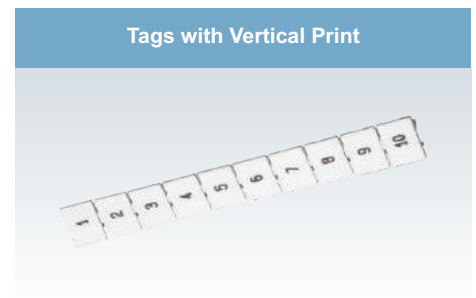
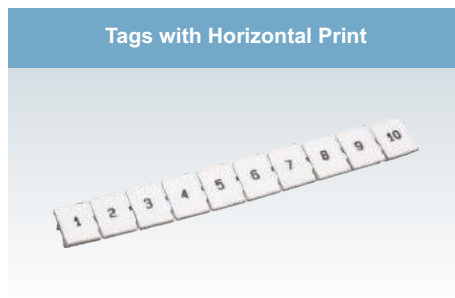
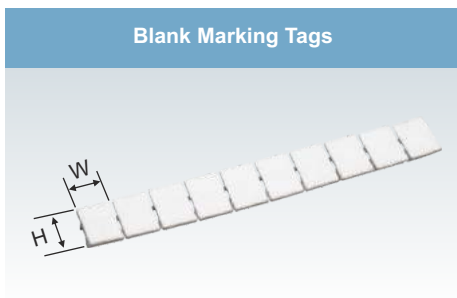
'K' Series Marking Tags

The quick to fix 'K' series Marking Tags facilitate identification of Electrical circuits in a Terminal Block assembly. This in turn makes the maintenance of individual components quicker and hassle free. The tags come with a large surface area providing better visibility. All 'K' series tags are available as strips in which an individual marker can be easily separated. CA509/K6F and CA509/K9F marking tags are continuous strips of 60 mm and 90 mm length respectively. The Marking Tags are available in both printed and blank versions. The printing can be horizontal or vertical in 2 or 3 digits, alphabets or symbols or a combination of these depending on user's requirement.

For ordering pre-printed marking tags, the following pattern should be followed:

For a strip of marking tags for CTS2.5UN Terminal Blocks marked horizontally from 1 to 10: CA509/K5/H/1-10 

For a strip of marking tags for CTS4UN Terminal Blocks marked vertically with alphabet A: CA509/K6/V/A 



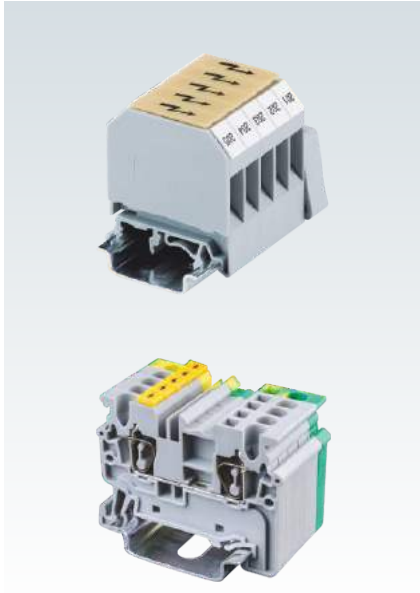
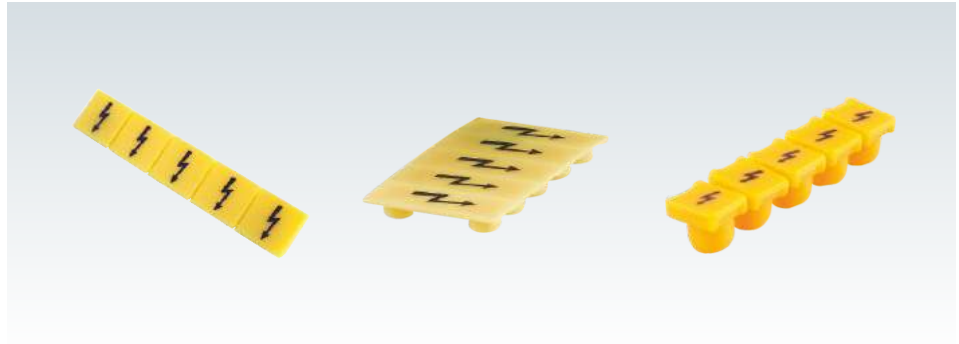
Part No.	Std. Pack		Dimensions	
	Packet	Strips	H	W
CA509/K2WHT	1	10	4.9	5.8
CA509/K3WHT	1	20	5.0	10.0
CA509/K4WHT	1	10	5.0	4.8
CA509/K5WHT	1	10	9.5	4.5
CA509/K6WHT	1	10	9.5	5.6
CA509/K6FWHT	1	10	9.5	60
CA509/K7.5WHT	1	10	5.3	7.5
CA509/K8WHT	1	10	10.5	7.5
CA509/K9WHT	1	10	10.3	8.7
CA509/K9FWHT	1	10	10.3	90.0
CA509/K10WHT	1	20	10.4	9.5
CA509/K12WHT	1	20	10.4	11.4
CA509/K16WHT	1	20	10.5	15.4
CA509/K2GWHT	1	10	5.0	5.0
CA509/K2B4WHT	1	10	5.8	9.1
CA509/K3.5WHT	1	8	9.2	3.5
MS3.5WHT	1	8	8	3.5
MS5WHT	1	10	5.0	8.0

Part No.	Std. Pack		Dimensions	
	Packet	Strips	H	W
CA509/K2/H	1	10	4.9	5.8
CA509/K3/H	1	20	5.0	10.0
CA509/K4/H	1	10	5.0	4.8
CA509/K5/H	1	10	9.5	4.5
CA509/K6/H	1	10	9.5	5.6
CA509/K6F/H	1	10	9.5	60
CA509/K7.5/H	1	10	5.3	7.5
CA509/K8/H	1	10	10.5	7.5
CA509/K9/H	1	10	10.3	8.7
CA509/K9F/H	1	10	10.3	90.0
CA509/K10/H	1	20	10.4	9.5
CA509/K12/H	1	20	10.4	11.4
CA509/K16/H	1	20	10.5	15.4
CA509/K2G/H	1	10	5.0	5.0
CA509/K2B4/H	1	10	5.8	9.1
CA509/K3.5WHT	1	8	9.2	3.5
MS3.5WHT	1	8	8	3.5
MS5WHT	1	10	5.0	8.0

Part No.	Std. Pack		Dimensions	
	Packet	Strips	H	W
CA509/K2/V	1	10	4.9	5.8
CA509/K3/V	1	20	5.0	10.0
CA509/K4/V	1	10	5.0	4.8
CA509/K5/V	1	10	9.5	4.5
CA509/K6/V	1	10	9.5	5.6
CA509/K6F/V	1	10	9.5	60
CA509/K7.5/V	1	10	5.3	7.5
CA509/K8/V	1	10	10.5	7.5
CA509/K9/V	1	10	10.3	8.7
CA509/K9F/V	1	10	10.3	90.0
CA509/K10/V	1	20	10.4	9.5
CA509/K12/V	1	20	10.4	11.4
CA509/K16/V	1	20	10.5	15.4
CA509/K2G/V	1	10	5.0	5.0
CA509/K2B4/V	1	10	5.8	9.1
CA509/K3.5WHT	1	8	9.2	3.5
MS3.5WHT	1	8	8	3.5
MS5WHT	1	10	5.0	8.0

WARNING LABELS

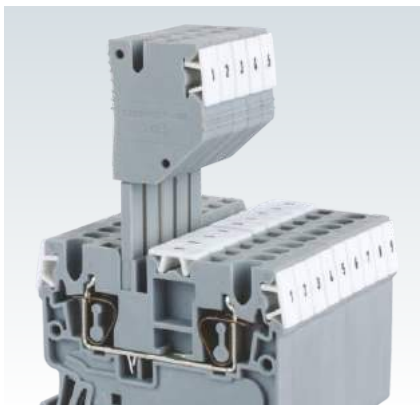
Warning label that can be mounted on top of the Terminal Block for giving visual identification, it also makes an entire DIN Rail Terminal Block assembly completely shock proof.



Terminal Block	Part No.	Standard Pack		
		Packet	Strips	Labels
CX2.5, CXG2.5 Series CXDL, CXDLG2.5 Series CXK2.5 Series CXM2.5, CXMG2.5	WLX2.5 WLX2.5/V (Vertical Imprint)	1	20	100
CX4, CXG4 Series CXF, CXVF Series CXK4 Series CYF, CYK, CYDLK Series	WLX4	1	20	100
CX6, CXG6 Series CXDB Series	WLX6	1	20	100
CX10, CXG10 Series	WLX10	1	20	100
CSC16T, CSCG16T	SWL16	1	20	100
CTS4UN, CTS2.5UE CDB4, CMDB4 Series	SWL4	1	20	100
CTS6U CDB6, CMDB6 Series	SWL6	1	20	100

TEST PLUGS

The Test Plugs make contact with the shorting link shaft of Terminal Block. Test adapters can be assembled with spacer to create space between to plugs & making alternate arrangement.



Terminal Block	Part No.	Standard Pack
CX2.5, CXG2.5 Series CXDL, CXDLG2.5 Series CXK2.5 Series CXM2.5, CXMG2.5	TX2.5	20

MARKER PLOTTER SYSTEM

CMPS600 BASIC

The CMPS600 BASIC and CMPS600 units are auxiliary plotters and has to be connected to a computer via a USB connection. It is a high speed plotting device and enables plotting of different markers in one setting. The marker fixture and the plotter pen have to be inserted before commencing the plotting operation. The base unit is primarily controlled through a computer with the help of CMPS software.

Dimensions for CMPS600 BASIC are
470 x 480 x 155 mm.

Dimensions for CMPS600 are
690 x 480 x 155 mm.

Technical Information:

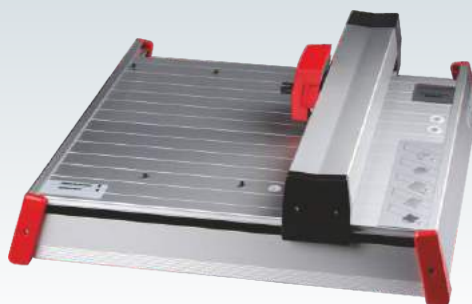
Type of plotter	: Flatbed plotter
Plotting speed with pen	: up to 40 mm/s
Plotter pen	: Special plotter pens with HP fixing
Addressable resolution	: 0.01 mm
Repeat accuracy	: 0.05 mm
PC Interface	: USB Port
Power supply input voltage	: 100-240V AC / 50-60Hz
Power supply input current	: 0.7 A max.
Power supply output voltage	: 24 V DC
Power supply output current	: 1.25 A max.

VE600

The engraving unit was specifically designed to be used with the CMPS600 BASIC and CMPS600 plotter systems. Changing back and forth between the pen-plotter and the engraver is easy. The engraver is meant to engrave signs on plastic, aluminium and other soft metals. Legend plates, push button inlays and other signage etc. can easily be produced with the VE600 engraving system.

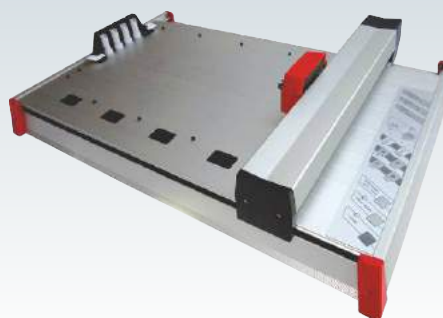
The engraver also uses the standard CMPS software.

CMPS600 BASIC



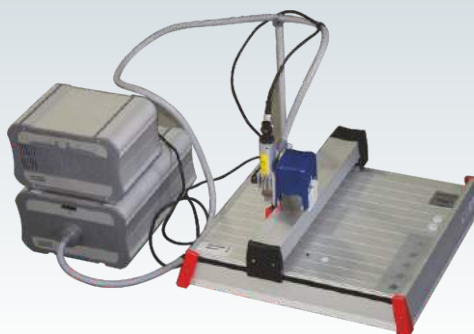
Description	Part No.
CMPS600 BASIC, A4 Size Plotter Unit (includes cable, power adapter & software)	PL-34130098

CMPS600



Description	Part No.
CMPS600, A3 Size Plotter Unit (includes cable, power adapter & software)	PL-34130099

ENGRAVING SYSTEM (VE600)



Description	Part No.
VE600 ENGRAVER UNIT (CMPS600 BASIC or CMPS600 REQUIRED)	PL-34000083

MARKER PLOTTER & ENGRAVER ACCESSORIES

DISPOSABLE PENS

These tubular nib pens are suitable for the CMPS600BASIC and CMPS600 plotters. The disposable pens use a special ink to deliver outstanding durability and print quality with the convenience of a use and throw system. This eliminates the need for messy ink refilling and pen cleaning operation. The ink is fast drying, smudge proof, fade resistant and resistant to chemicals when used on the 'K' series Connectwell marking tags. They are available in 6 sizes differentiated by their body colour.



Tip Width	Part No.
0.18 mm	PL-35003118
0.25 mm	PL-35003125
0.35 mm	PL-35003135
0.50 mm	PL-35003150
0.70 mm	PL-35003170
1.00 mm	PL-35003200

FIXTURES

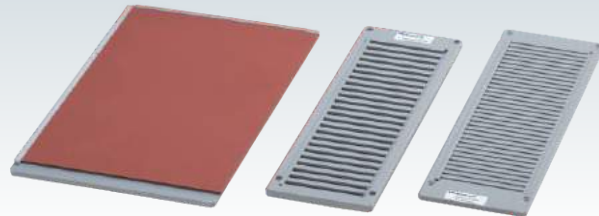
Fixtures are required for alignment of markers with respect to the plotter pen. Different marker fixtures can be mounted on the plotter bed of the CMPS600BASIC and CMPS600 plotters at the same time thereby reducing its set up time.

The CMPS600BASIC plotter bed can accept:

- 2 of the K5 fixtures or
- 2 of the K2 fixtures or
- 1 each of the above fixtures or
- 1 of the K5 triple fixture.

The CMPS600 plotter bed can accept:

- 4 of the K5 fixtures or
- 4 of the K2 fixtures or
- a combination of the above two fixtures.



Description	For Marking Tag	Holding Capacity	Part No.
K5 Fixture	CA509/K5, K6, K8, K10, K12, K16	24 Strips	PL-34902001
K2 Fixture	CA509/K2, K3, K4, K20, K25, K2B4	24 Strips	PL-34902081
K5 Triple Fixture	CA509/K5, K6, K8, K10, K12, K16	72 Strips	PL-34130015
K9 Fixture	CA509/K9	24 Strips	PL-34902057
K2G Fixture	CA509/K2G	25 Strips	PL-34130010
Engraving Support Plate			PL-34902106

ENGRAVING NEEDLES



Engraving needles are selected depending on the media being engraved. For aluminium and other soft metal media, the double tooth cutter in various tip widths can be selected. For plastic media, engraving needles with a 15° angle needs to be used. Other engraving needle options are available on request.

Description	Tip Width	Part No.
Double Tooth Cutter for Plastic and Alluminium	0.50 mm	PL-35010030
Double Tooth Cutter for Plastic and Alluminium	0.60 mm	PL-35010031
Double Tooth Cutter for Plastic and Alluminium	0.80 mm	PL-35010032
Double Tooth Cutter for Plastic and Alluminium	1.00 mm	PL-35010033
Double Tooth Cutter for Plastic and Alluminium	1.20 mm	PL-35010034
Double Tooth Cutter for Plastic and Alluminium	1.40 mm	PL-35010035
Double Tooth Cutter for Plastic and Alluminium	1.60 mm	PL-35010036
Double Tooth Cutter for Plastic and Alluminium	2.00 mm	PL-35010037
Double Tooth Cutter for Plastic and Alluminium	2.40 mm	PL-35010038
Double Tooth Cutter for Plastic and Alluminium	3.00 mm	PL-35010039
Engraving Needle 15° for Plastic	0.20 mm	PL-35010003
Engraving Needle 15° for Plastic	0.30 mm	PL-35010002
Engraving Needle 15° for Plastic	0.40 mm	PL-35010001
Engraving Needle 15° for Plastic	0.50 mm	PL-35010000
Engraving Needle 15° for Plastic	0.70 mm	PL-35010004
Engraving Needle 15° for Plastic	1.00 mm	PL-35010005
Engraving Needle 15° for Plastic Set (0.20 - 1.00 mm)	-	PL-35010006

SCREW CLAMP TERMINAL BLOCK SHORTING LINKS

Shorting / Bridging System for Polyamide Screw Clamp Terminal Blocks

The shorting systems bridge potentials between terminal blocks, reducing wiring time. Adjacent blocks or selective terminal blocks within an assembly can be easily interconnected, leaving terminal clamps free for wiring. Preassembled shorting links, which are ready for installation, are used for quick shorting or individual components can be selected to create custom or extra long shorting links. The current carrying capacity of shorting systems is lower than the rated current of the respective Terminal Blocks, therefore applied current must not exceed the maximum current value (IEC/EN) of the Terminal Block.

Preassembled Internal shorting link assemblies

Internal shorting link Assemblies consist of a Current Bar, Shorting Sleeves and screws. They install easily into the center of the terminal block and connect to the current bar. They are available as standard 2, 3, 4, 10 or 100 pole assemblies and are ready for immediate installation. Insulated preassembled internal shorting link assemblies provide shock protection when installed on Terminal Blocks.

Insulated External Shorting Links

External shorting links bridge potentials between terminal blocks, reducing wiring time. Adjacent or selected blocks within an assembly can be easily interconnected. Individual links may be removed for selective shorting. These are insulated and available in 2, 3, 4 and 10 pole versions. They are made of tin plated brass/copper. Insulated External Link must be tightened to the recommended torque specified to get a reliable connection.

Permanent Shorting Links

Shorting Links are used to create custom shorting assemblies for increased number of poles. The current bar with the required number of poles can be selected, or can be cut in the field to the required length. They are made of tin or nickel plated copper or brass.

Shorting Sleeves & Screws

Shorting Sleeves & Screws ensure reliable and mechanically safe electrical connections between shorting links and the Terminal Block current bars. One shorting sleeve is required for each shorted Terminal Block. They are made of nickel plated brass. Shorting Sleeve and Screws are supplied with spring washer. The shorting screws must be tightened to the recommended torque specified to get a reliable connection.

1 Internal shorting system not available.

2 100 pole strip can be broken down to any number of poles desired.

Pre Assembled Shorting Link

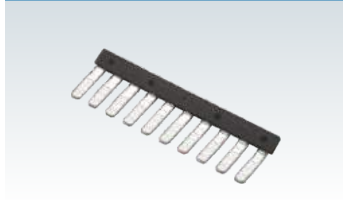


Insulated Pre Assembled Shorting Link



Terminal Series	Poles	Part No.	Torque	Std. Pack	Part No.	Torque	Std. Pack
CTS2.5UN	2	CA721/2	0.4 Nm	100	CA741/2	0.4 Nm	100
	3	CA721/3		100	CA741/3		100
	4	CA721/4		100	CA741/4		100
	10	CA721/10		10	CA741/10		10
	100 ²	CA721/100		10	CA741/100		10
CTS4UN	2	CA722/2	0.4 Nm	100	CA742/2	0.4 Nm	100
	3	CA722/3		100	CA742/3		100
	4	CA722/4		100	CA742/4		100
	10	CA722/10		10	CA742/10		10
	100 ²	CA722/100		10	CA742/100		10
CTS6U	2	CA723/2	0.5 Nm	100	CA743/2	0.5 Nm	100
	3	CA723/3		50	CA743/3		50
	4	CA723/4		50	CA743/4		50
	10	CA723/10		10	CA743/10		10
	10(breakable)	CA723/100		10	CA743/100		10
CTS10U	2	CA724/2	0.5 Nm	100	CA744/2	0.5 Nm	100
	3	CA724/3		50	CA744/3		50
	4	CA724/4		50	CA744/4		50
	10	CA724/10		10	CA744/10		10
	10(breakable)	CA724/100		10	CA744/100		10
CTS16U	2	CA751/2	0.8 Nm	50	CA761/2	0.8 Nm	50
	3	CA751/3		50	CA761/3		50
	4	CA751/4		50	CA761/4		50
	10	CA751/10		10	CA761/10		10
	10(breakable)	CA751/100		10	CA761/100		10
CTS25UN	2	CA725/2	0.8 Nm	50	CA745/2	0.8 Nm	50
	3	CA725/3		20	CA745/3		20
	4	CA725/4		20	CA745/4		20
	10	CA725/10		10	CA745/10		10
	10(breakable)	CA725/100		10	CA745/100		10
CTS35UN	2	CA771/2	0.8 Nm	50	CA781/2	0.8 Nm	50
	3	CA771/3		20	CA781/3		20
	4	CA771/4		20	CA781/4		20
	10	CA771/10		10	CA781/10		10
	10(breakable)	CA771/100		10	CA781/100		10
CMT4	2	CA727/2	0.4 Nm	100	CA747/2	0.4 Nm	100
	3	CA727/3		100	CA747/3		100
	4	CA727/4		100	CA747/4		100
	10	CA727/10		10	CA747/10		10
	100 ²	CA727/100		10	CA747/100		10
CSDL4U ¹	2	CA729/2	0.5 Nm	100	CA749/2	0.5 Nm	100
	3	CA729/3		50	CA749/3		50
	4	CA729/4		50	CA749/4		50
	10	CA729/10		10	CA749/10		10
	10(breakable)	CA729/100		10	CA749/100		10
CSFL4U ¹	2						
	3						
	4						
	10						
	10(breakable)						
CAFL4U ¹	2						
	3						
	4						
	10						
	10(breakable)						
CTL2.5U	2	CA722/2	0.4 Nm	100			
	3	CA722/3		50			
	4	CA722/4		50			
	10	CA722/10		10			
	100 ²	CA722/100		10			
CTL2.5U(L)	2						
	3						
	4						
	10						
	100 ²						

Insulated External Shorting Links



Part No.	Torque	Std. Pack
CA717/2	0.4 Nm	100
CA717/3		100
CA717/4		100
CA717/10		20
CA713/2	0.5 Nm	100
CA713/3		100
CA713/4		100
CA713/10		20
CA710/2	0.8 Nm	100
CA710/3		50
CA710/4		50
CA710/10		20
CA718/2	0.8 Nm	100
CA718/3		50
CA718/4		50
CA718/10		20
CA714/2	0.5 Nm	100
CA714/3		100
CA714/4		100
CA714/10		20
CA711/2	0.8 Nm	100
CA711/3		50
CA711/4		50
CA711/10		20
CA716/2	0.8 Nm	50
CA716/3		50
CA716/4		50
CA716/10		20
CA715/2	0.4 Nm	100
CA715/3		100
CA715/4		100
CA715/10		20

Permanent Shorting Links



Part No.	Std. Pack
CA703/01	100
CA704/01	100
CA705/01	100
CA731/10	100
CA731/100	10
CA703/1	100
CA704/1	100
CA705/1	100
CA732/10	100
CA732/100	10
CA732/10-A	100
CA703/2	100
CA704/2	100
CA705/2	100
CA733/10	100
CA703/3	100
CA704/3	100
CA705/3	100
CA734/10	100
CA703/8	100
CA704/8	100
CA705/8	100
CA739/10	100
CA703/4	100
CA704/4	100
CA705/4	100
CA735/10	100
CA703/10	100
CA704/10	100
CA705/10	100
CA770/10	100
CA703/1	100
CA704/1	100
CA705/1	100
CA732/10	100
CA732/100	10
CA731/10-A	100
CA703/6	100
CA704/6	100
CA705/6	100
CA737/10	100
CA703/1	100
CA704/1	100
CA705/1	100
CA732/10	100
CA732/100	10
CA732/10-A	100

Shorting Sleeves & Screws



Part No.	Torque	Std. Pack
CA707/S/Q/01	0.4 Nm	100
CA707/S/Q/01	0.4 Nm	100
CA707/S/Q/1	0.5 Nm	100
CA707/S/Q/1	0.5 Nm	100
CA707/S/Q/1	0.8 Nm	100
CA707/S/Q/2	0.8 Nm	100
CA707/S/Q/2	0.8 Nm	100
CA607/S/Q	0.4 Nm	100
CA707/S/Q/3	0.5 Nm	100
CA707/S/Q/01	0.4 Nm	100

SCREW CLAMP TERMINAL BLOCK SHORTING LINKS

Shorting / Bridging System for Polyamide Screw Clamp Terminal Blocks

The shorting systems bridge potentials between terminal blocks, reducing wiring time. Adjacent blocks or selective terminal blocks within an assembly can be easily interconnected, leaving terminal clamps free for wiring. Preassembled shorting links, which are ready for installation, are used for quick shorting or individual components can be selected to create custom or extra long shorting links. The current carrying capacity of shorting systems is lower than the rated current of the respective Terminal Blocks, therefore applied current must not exceed the maximum current value (IEC/EN) of the Terminal Block.

Preassembled Internal shorting link assemblies

Internal shorting link Assemblies consist of a Current Bar, Shorting Sleeves and screws. They install easily into the center of the terminal block and connect to the current bar. They are available as standard 2, 3, 4, 10 or 100 pole assemblies and are ready for immediate installation. Insulated preassembled internal shorting link assemblies provide shock protection when installed on Terminal Blocks.

Insulated External Shorting Links

External shorting links bridge potentials between terminal blocks, reducing wiring time. Adjacent or selected blocks within an assembly can be easily interconnected. Individual links may be removed for selective shorting. These are insulated and available in 2, 3, 4 and 10 pole versions. They are made of tin plated brass/copper. Insulated External Link must be tightened to the recommended torque specified to get a reliable connection.

Permanent Shorting Links

Shorting Links are used to create custom shorting assemblies for increased number of poles. The current bar with the required number of poles can be selected, or can be cut in the field to the required length. They are made of tin or nickel plated copper or brass.

Shorting Sleeves & Screws

Shorting Sleeves & Screws ensure reliable and mechanically safe electrical connections between shorting links and the Terminal Block current bars. One shorting sleeve is required for each shorted Terminal Block. They are made of nickel plated brass. Shorting Sleeve and Screws are supplied with spring washer. The shorting screws must be tightened to the recommended torque specified to get a reliable connection.

Pre Assembled Shorting Link

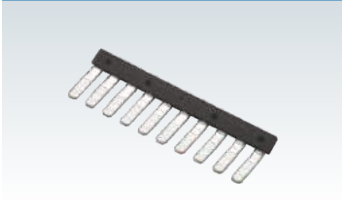


Insulated Pre Assembled Shorting Links



Terminal Series	Poles	Part No.	Torque	Std. Pack	Part No.	Torque	Std. Pack
CTS4USC CHV4U	2	CA623/2	0.4 Nm	100	CA643/2	0.4 Nm	100
	3	CA623/3		100	CA643/3		100
	4	CA623/4		100	CA643/4		100
	10	CA623/10		10	CA643/10		10
CTS6USC CHV6U	2	CA624/2	0.5 Nm	100	CA644/2	0.5 Nm	100
	3	CA624/3		50	CA644/3		50
	4	CA624/4		50	CA644/4		50
	10	CA624/10		10	CA644/10		10
CTS10USC CHV10U	2	CA625/2	0.5 Nm	100	CA645/2	0.5 Nm	100
	3	CA625/3		50	CA645/3		50
	4	CA625/4		50	CA645/4		50
	10	CA625/10		10	CA645/10		10
CDGL2.5 CTGL2.5	2	CA627/2	0.4 Nm	100			
	3	CA627/3		100			
	4	CA627/4		100			
	10	CA627/10		10			
PTB35/50 PTB35/50SH (Bolt type Shorting System)	2	CA703/9	3.0 Nm	10			
	3	CA704/9		10			
	4	CA705/9		10			
PTB70/95 PTB70/95SH (Bolt type Shorting System)	2	CA703/11	6.0 Nm	10			
	3	CA704/11		10			
	4	CA705/11		10			
CTS50/70N CTS50/70NA	2	CA628/2	3.0 Nm	10			
	3	CA628/3		10			
CTS95/120N	2	CA629/2	6.0 Nm	10			
	3	CA629/3		10			
CSB3U/N3U CSB3/N3UL CSB3U	2	CA728/2	0.4 Nm	100			
	3	CA728/3		100			
	4	CA728/4		100			
	10	CA728/10		10			
CBS4U CSB4/N4U CBS5U CSB5/N5U	2	CA772/2	0.4 Nm	100			
	3	CA772/3		100			
	4	CA772/4		100			
	10	CA772/10		10			
STH3	2	CA773/2	0.4 Nm	100			
	3	CA773/3		100			
	4	CA773/4		100			
	10	CA773/10		10			
STH3	2	CA774/2	0.4 Nm	100			
	3	CA774/3		100			
	4	CA774/4		100			

Insulated External Shorting Links



Permanent Shorting Links



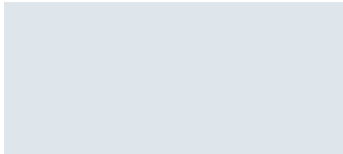
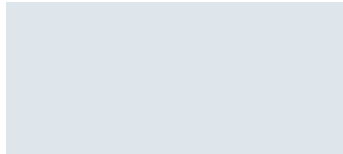
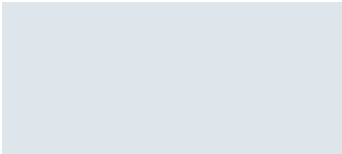
Shorting Sleeves & Screws



Part No. Torque Std. Pack

Part No. Torque Std. Pack

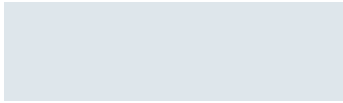
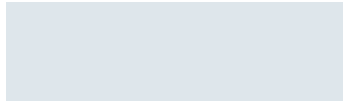
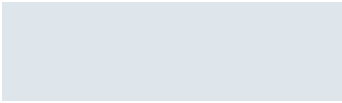
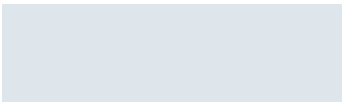
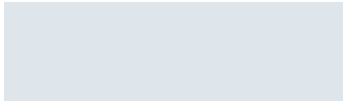
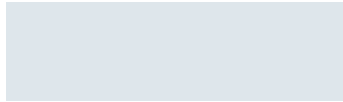
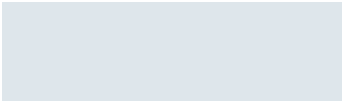
Part No. Torque Std. Pack



CA715/2	0.4 Nm	100
CA715/3		100
CA715/4		100
CA715/10		20

CA703/1	100
CA704/1	100
CA705/1	100
CA732/10	100

CA611/S/Q	0.4 Nm	100
-----------	--------	-----



MELAMINE TERMINAL BLOCK SHORTING LINKS

Preassembled Internal shorting link assemblies

Internal shorting link Assemblies consist of a Current Bar, Shorting Sleeves and screws. They install easily into the center of the Terminal Block and connect to the current bar. They are available as standard 2, 3, 4, 10 or 100 pole assemblies and are ready for immediate installation. Preassembled Insulated internal shorting link assemblies provide shock protection when installed on Terminal Blocks.

Permanent Shorting Links

These are used to create custom shorting assemblies for increased number of poles. The current bar with the required number of poles can be selected, or can be cut in the field to the required length. They are made of tin or nickel plated copper or brass.

Shorting Sleeves & Screws

Shorting Sleeves & Screws ensure reliable and mechanically safe electrical connections between shorting link and the Terminal Block current bars. One shorting sleeve is required for each shorted Terminal Block. They are made of nickel plated brass.

Switchable Shorting Links and Long Shorting Sleeves for temporary shorting

These links are used for switchable cross connection of adjacent Terminal Blocks of the same size. They can be used only in conjunction with the Long Shorting Sleeves and Screws.

STUD TYPE TERMINAL BLOCK SHORTING LINKS

Shorting / Bridging System for Stud type Terminal Blocks

Fork Type Shorting Links

These links have a possibility of quick insertion and removal. The entire nut assembly of the Terminal Block need not be removed for the insertion or removal of these links. They are available in standard 2, 3 or 4 pole configurations. They are also available in an insulated version which provides shock protection when installed on Terminal Blocks.

Ring Type Shorting Links

These links provide a secure, permanent shorting possibility for stud type Terminal Blocks. They are available in standard 2, 3 or 4 pole configurations. They are also available in an insulated version which provides shock protection when installed on Terminal Blocks.

Pre Assembled Shorting Link



Insulated Pre Assembled Shorting Link



Terminal Series	Poles	Part No.	Torque	Std. Pack	Part No.	Torque	Std. Pack
CTS2.5(M)	2	CA521/2	0.4 Nm	100	CA621/2	0.4 Nm	100
	3	CA521/3		100	CA621/3		100
	4	CA521/4		100	CA621/4		100
	10	CA521/10		10	CA621/10		10
CTS2.5 CTS4SC	2	CA522/2	0.4 Nm	100	CA622/2	0.4 Nm	100
	3	CA522/3		100	CA622/3		100
	4	CA522/4		100	CA622/4		100
	10	CA522/10		10	CA622/10		10
CTS6 CTS6SC	2	CA723/2	0.5 Nm	100	CA743/2	0.5 Nm	100
	3	CA723/3		50	CA743/3		50
	4	CA723/4		50	CA743/4		50
	10	CA723/10		10	CA743/10		10
CTS10	2	CA724/2	0.5 Nm	100	CA744/2	0.5 Nm	100
	3	CA724/3		50	CA744/3		50
	4	CA724/4		50	CA744/4		50
	10	CA724/10		10	CA744/10		10
CTS16	2	CA751/2	0.8 Nm	50	CA761/2	0.8 Nm	50
	3	CA751/3		50	CA761/3		50
	4	CA751/4		50	CA761/4		50
	10	CA751/10		10	CA761/10		10
CTS35	2						
	3						
	4						
	10						

Fork Type Shorting Link



Insulated Fork Type Shorting Link



Terminal Series	Poles	Part No.	Torque	Std. Pack	Part No.	Torque	Std. Pack
CSTSB3	2	CA512/5-2	0.5 Nm	100	CA514/5-2	0.5 Nm	100
	3	CA512/5-3		50	CA514/5-3		50
	4	CA512/5-4		50	CA514/5-4		50
CSTSB4 / CSTSB5 CSTSB4N4 CMDT4 / CMDT4SH	2	CA512/2-2	1.2 Nm	100	CA514/2-2	1.2 Nm	100
	3	CA512/2-3		50	CA514/2-3		50
	4	CA512/2-4		50	CA514/2-4		50
CSTSN4/N5 CSTSN4U/N5U CSTSB4U/B5U CBS4U/CSB4/N4U CBS5U/CSB5/N5U	2	CA512/1-2	1.2 Nm	100	CA514/1-2	1.2 Nm	100
	3	CA512/1-3		50	CA514/1-3		50
	4	CA512/1-4		50	CA514/1-4		50
CSTSN6 CSTSN6U	2	CA512/7-2	1.2 Nm	100	CA514/7-2	1.2 Nm	100
	3	CA512/7-3		50	CA514/7-3		50
	4	CA512/7-4		50	CA514/7-4		50
CSTSN4(15) CSTSN5(15)	2	CA512/9-2	1.2 Nm	100	CA514/9-2	1.2 Nm	100
	3	CA512/9-3		50	CA514/9-3		50
	4	CA512/9-4		50	CA514/9-4		50
CSTSRN5/RN6	2	CA512/11-2	1.2 Nm	50	CA514/11-2	1.2 Nm	50
STH4 STH4DT STH4DTSH	2	CA512/13-2	1.2 Nm	100	CA514/13-2	1.2 Nm	100
	3	CA512/13-3		50	CA514/13-3		50
	4	CA512/13-4		50	CA514/13-4		50
STH3/CSB3/ N3U CSB3U	2	CA512/15-2	0.5 Nm	100	CA514/15-2	0.5 Nm	100
	3	CA512/15-3		50	CA514/15-3		50
	4	CA512/15-4		50	CA514/15-4		50



Part No.	Std. Pack.
CA503/01	100
CA504/01	100
CA505/01	100
CA510/01	100

Part No.	Torque	Std. Pack.
CA507/S/Q/01	0.4 Nm	100

Part No.	Std. Pack.
CA506/01	100

Part No.	Torque	Std. Pack.
CA507/L/Q/01	0.4 Nm	100

CA503/1	100
CA504/1	100
CA505/1	100
CA510/1	100

CA707/S/Q/1	0.4 Nm	100
-------------	--------	-----

CA506/1	100
---------	-----

CA707/L/Q/1	0.4 Nm	100
-------------	--------	-----

CA703/2	100
CA704/2	100
CA705/2	100
CA733/10	100

CA707/S/Q/1	0.5 Nm	100
-------------	--------	-----

CA706/2	100
---------	-----

CA707/L/Q/1	0.5 Nm	100
-------------	--------	-----

CA703/3	100
CA704/3	100
CA705/3	100
CA734/10	100

CA707/S/Q/1	0.5 Nm	100
-------------	--------	-----

CA706/3	100
---------	-----

CA707/L/Q/1	0.5 Nm	100
-------------	--------	-----

CA703/8	100
CA704/8	100
CA705/8	100
CA739/10	100

CA707/S/Q/1	0.8 Nm	100
-------------	--------	-----

CA706/8	100
---------	-----

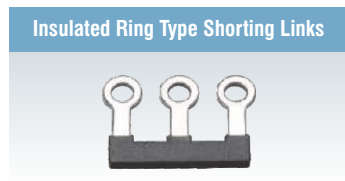
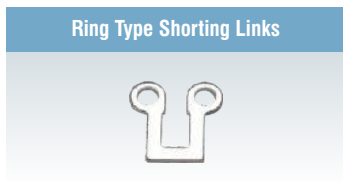
CA707/L/Q/1	0.8 Nm	100
-------------	--------	-----

CA503/5	100
CA504/5	100
CA505/5	100
CA510/5	100

CA508/S/Q	0.8 Nm	100
-----------	--------	-----

CA506/5	100
---------	-----

CA508/L/Q	0.8 Nm	100
-----------	--------	-----



Part No.	Torque	Std. Pack
CA512/6-2	0.5 Nm	100
CA512/6-3		50
CA512/6-4		50
CA512/4-2	1.2 Nm	100
CA512/4-3		50
CA512/4-4		50
CA512/3-2	1.2 Nm	100
CA512/3-3		50
CA512/3-4		50

Part No.	Torque	Std. Pack
CA514/6-2	0.5 Nm	100
CA514/6-3		50
CA514/6-4		50
CA514/4-2	1.2 Nm	100
CA514/4-3		50
CA514/4-4		50
CA514/3-2	1.2 Nm	100
CA514/3-3		50
CA514/3-4		50

Part No.	Torque	Std. Pack
CA514/14-3A	1.2 Nm	10
CA514/14-4A		10

CA512/8-2	1.2 Nm	100
CA512/8-3		50
CA512/8-4		50

CA514/8-2	1.2 Nm	100
CA514/8-3		50
CA514/8-4		50

CA514/14-3A	1.2 Nm	10
CA514/14-4A		10

CA512/10-2	1.2 Nm	100
CA512/10-3		50
CA512/10-4		50

CA514/10-2	1.2 Nm	100
CA514/10-3		50
CA514/10-4		50

CA514/14-3A	1.2 Nm	10
CA514/14-4A		10

CA512/12-2	1.2 Nm	50
CA512/14-2	1.2 Nm	100
CA512/14-3		50
CA512/14-4		50

CA514/12-2	1.2 Nm	50
CA514/14-2	1.2 Nm	100
CA514/14-3		50
CA514/14-4		50

CA514/14-3A	1.2 Nm	10
CA514/14-4A		10

CA512/17-2	0.5 Nm	100
CA512/17-3		50
CA512/17-4		50

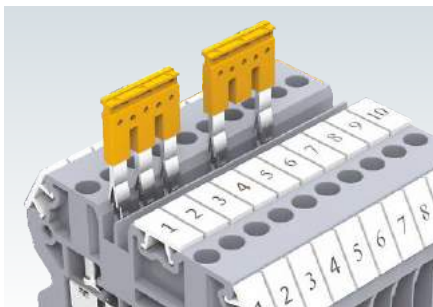
CA514/17-2	0.5 Nm	100
CA514/17-3		50
CA514/17-4		50

CA514/14-3A	1.2 Nm	10
CA514/14-4A		10

CX, CSC, CY, AS SERIES TERMINAL BLOCK SHORTING LINKS



The possibility of using 2 independent rows for bridging enables the creation of various circuit combinations. Shorting links can be marked with a felt tip pen on the recess provided on top, to clearly indicate shorted positions.



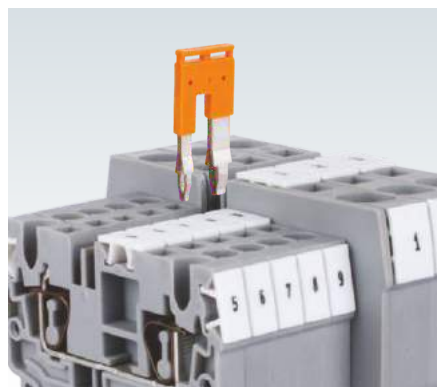
Individual Terminal Blocks in an assembly can be skipped from getting shorted with the adjacent terminal. This is achieved by breaking intermediate contacts from the standard shorting link.



Terminal Block		Part No.	I _{max}	Std. Pack.
CP1.5 & CPG1.5 Series	2 pole	JX1.5/2	16 A	100
CP1.5/3, CP1.5/4 Series	3 pole	JX1.5/3	16 A	50
CPG1.5/3, CPG1.5/4 Series	4 pole	JX1.5/4	16 A	50
CPDL1.5 Series	10 pole	JX1.5/10	16 A	10
CX2.5, CXG2.5 Series CXDL, CXDLG2.5 Series CXK2.5 Series CXM2.5, CXMG2.5	2 pole	JX2.5/2	24 A	100
	3 pole	JX2.5/3	24 A	50
	4 pole	JX2.5/4	24 A	50
	5 pole	JX2.5/5	24 A	50
	6 pole	JX2.5/6	24 A	10
	7 pole	JX2.5/7	24 A	10
CX4, CXG4 Series CXF, CXVF Series CXK4 Series CYF, CYK, CYDLK Series	8 pole	JX2.5/8	24 A	10
	10 pole	JX2.5/10	24 A	10
	2 pole	JX4/2	32 A	100
	3 pole	JX4/3	32 A	50
CX6, CXG6 Series CXDB Series	4 pole	JX4/4	32 A	50
	8 pole	JX4/8	32 A	10
	10 pole	JX4/10	32 A	10
CX10, CXG10 Series	2 pole	JX6/2	41 A	100
	3 pole	JX6/3	41 A	50
	4 pole	JX6/4	41 A	50
	10 pole	JX6/10	41 A	10
ATL Series	2 Pole	JX10/2	57 A	20
	2 pole	CA801/A2	24 A	100
	3 pole	CA801/A3	24 A	100
	4 pole	CA801/A4	24 A	100
CSC16T CSCP2.5T Series	10 pole	CA801/A10	24 A	10
	2 Pole	CA801/5	76 A	100
	2 Pole	CA803/1	24 A	100
	2 Pole Adjacent	CA801/1	24 A	100
AS2.5 Series	2 Pole Alternate	CA801/1-3	24 A	100
	2 Pole Wire Type	CA901/1	17.5 A	100
	2 Pole Adjacent	CA801/2	20 A	100
AS4 Series	2 Pole Alternate	CA801/2-3	20 A	100
	2 Pole Wire Type	CA901/2	17.5 A	100
	2 Pole Adjacent	CA801/3	35 A	100
AS6 Series	2 Pole Alternate	CA801/3-3	30 A	100
	2 Pole Wire Type	CA901/3	30 A	100

Step Down Shorting Links

These Links help in shorting Spring Clamp Terminal Blocks of different sizes. CA801/8 and JXS shorting link are used for shorting adjacent Terminal Blocks of different series.



Terminal Block		Part No.	I _{max}	Std. Pack.
CX4 to CX2.5 Series Terminals		JXS4/2.5	24 A	50
CX6 to CX2.5 Series Terminals		JXS6/2.5	24 A	50
CX6 to CX4 Series Terminals		JXS6/4	32 A	50
CX10 to CX2.5 Series Terminals		JXS10/2.5	24 A	50
CX10 to CX6 Series Terminals		JXS10/6	24 A	50
AS6 Series to AS2.5 Series		CA801/8	24 A	100
AS6 Series to AS4 Series (Wire Type)		CA901/4	30 A	100
AS6 Series to AS2.5 Series (Wire Type)		CA901/5	24 A	100
AS4 Series to AS2.5 Series (Wire Type)		CA901/6	24 A	100

END PLATES

End Plates are used to cover the live parts of the last Terminal Block. They should be used at the end of an assembly of identical Terminal Blocks and whenever is changed in physical size of the Terminal Block.



Part No.	Std. Pack	Dimension (H x W x T)	Suitable for
EP2.5/4UN	50	32 x 39 x 1.5	CTS2.5UN/2.5UE/4UN/CTT2.5UK/T/J/E
EP6/10U	50	31 x 42.5 x 1.5	CTS6U/CTS10U
EPCMC1-2	50	35.5 x 46.5 x 2.5	CMC1-2
EPCMC2-2	50	40.5 x 65 x 2.5	CMC2-2
EPCDL4UN	50	47.5 x 57 x 1.5	CDL4UN/CDL4UN(I.S)
EPODL4U	50	49 x 68 x 5.5	ODL4U/ODL4UA(Front Side)
EP1ODL4U	50	24 x 68 x 3	ODL4U/ODL4UA(Back Side)
EPODL2.5	50	55 x 59 x 4.6	ODL2.5 Series
EP1ODL2.5	50	24 x 59 x 2.5	ODL2.5 Series
EPCDGL2.5	50	48 x 71.4 x 1.2	CDGL2.5
EPCTL2.5U	50	55.5 x 84 x 1.5	CTL2.5U/2.5UL/2.5U(I.S)
EPCTL2.5UH	50	55.5 x 61 x 1.5	CTL2.5UH/2.5UH(L)/2.5UH(I.S)D2
EPCTLG2.5	50	62.5 x 87.5 x 1.2	CTGL2.5/CTGL2.5(E)MOV
EPCMT4	50	23 x 27 x 1.5	CMT4
EPCMB4	50	27 x 27 x 7	CMB4
EPCBS3U	50	26.2 x 49 x 1.5	CBS & CSB Series
EPCAF4U	25	32 x 72 x 1.5	CAFL4U/4UL/4UN
EPDDL4U	25	49 x 87.6 x 3	DDFL4U/4ULR/4U(E)/4U(E)LR
EPCDTTU	50	41 x 63 x 3	CDTTU/CDTTUSH
EPCKT4U	50	30.5 x 46.5 x 2.5	CKT4U
EPCKT4U/4	50	65 x 38.3 x 1.5	CKT4U/4
EPCDS6U	50	37.2 x 82 x 1.5	CDS6U/6UTS/6UFT/6USC
EPCGT4U	50	40.5 x 43 x 1	CGT4U
EPUSC	50	52 x 48.5 x 1.5	CTS4USC/6USC/10USC/CHV4U/6U/10U
EPCTC4U	50	34.5 x 47 x 2.5	CTC4U
EPCSTSU	50	31 x 50 x 1.5	CSTSN4U/N5U/N6U/B4U/B5U
EPSTH3	50	34.4 x 47 x 1.5	STH3
EPSTH4	50	39.5 x 46 x 1.5	STH4
EPSTH6	50	51 x 63.5 x 2	STH6
EPSTH4DT	50	37.5 x 86 x 1.5	STH4DT / STH4DTSH
EPCSC16T	50	82 x 38 x 1.5	CSC16T/CSCG16T
EPCSCP2.5T(L&R)	50	27.3 x 35 x 5	CSCP2.5T/CSCP2.5T2
EPAS2.5	50	35 x 54 x 1.5	AS2.5, 2.5/3, 2.5/4, AGT2.5, 2.5/3, 2.5/4
EPAS4	50	27.5 x 61 x 1.5	AS4, 4/3, 4/4, AGT4, 4/3, 4/4
EPAS6	50	33.5 x 74 x 1.5	AS6, 6/3, AGT6, 6/3
EPADLG2.5	50	83.75 x 58 x 1.2	ADLG2.5
EPATL2.5	50	100 x 69.7 x 1.2	ATL2.5
EPATL2.5H	50	77.3 x 69.7 x 1.2	ATL2.5H
EPATLG2.5	50	100 x 68.75 x 1.2	ATLG2.5
CTSEP01	50	31 x 36.5 x 1.8	CTS2.5(M)
CTSEP1	50	49 x 40 x 2.7	CTS2.5/6/10/4SC/6SC
CTSEP2	50	54 x 49.5 x 3	CTS16
CTSEP3	25	52 x 58 x 2.7	CTS35
CTSEP1SC	50	43.5 x 50 x 2.5	CTS10SC
CSTSEP2	50	44.5 x 50 x 3	CSTSB3/B4/B5/N4/N5/N4(15)/N5(15)/N6
CSTSRP	50	48.5 x 43 x 3	CSTSRN5/CSTSRN6
EPCMDT4	50	48.7 x 68 x 2.4	CMDT4/CMDT4SH
EPCX2.5	50	30.5 x 49.7 x 1.5	CX2.5 / CXG2.5
EPCX2.5/3	50	30.5 x 62.2 x 1.5	CX2.5/3 / CXG2.5/3 / CXK2.5
EPCX2.5/4	50	30.5 x 74.7 x 1.5	CX2.5/4 / CXG2.5/4 / CXK2.5/4 / CX2.5/4P
EPCX4	50	30.5 x 54.8 x 1.5	CX4 / CXG4
EPCX4/3	50	30.5 x 70.5 x 1.5	CX4/3 / CXG4/3 / CXK4
EPCX4/4	50	30.5 x 86.2 x 1.5	CX4/4 / CXG4/4 / CXK4/4
EPCX6	50	35.3 x 62.1 x 1.5	CX6 / CXG6
EPCX6/3	50	35.3 x 82.2 x 1.5	CX6/3 / CXG6/3
EPCX10	50	41.6 x 70 x 1.5	CX10 / CXG10
EPCX10/3	50	41.6 x 95.3 x 1.5	CX10/3 / CXG10/3
EPCXDL2.5	50	41.8 x 72.7 x 1.5	CXDL2.5 Series
EPCXS2.5	50	35.6 x 43 x 1.5	CXS2.5 / CXSG2.5 / CXS4 / CXSG4
EPCM1.5S	50	18 x 26.5 x 12	CM1.5S / CM1.5S2
EPCM2.5S	50	20 x 30 x 12.45	CM2.5S / CM2.5S2
EPCM4S	50	23 x 33.7 x 14.5	CM4S / CM4S2
EPCMS2.5	50	25 x 31 x 1.5	CMS2.5
EPCX2.5SN	50	36.8 x 15.9 x 0.5	CX2.5SN
EPCXM2.5	50	29.5 x 37 x 1.5	CXM2.5 / CXMG2.5
EPCXCP2.5	50	27.3 x 35 x 3	CXCP2.5/4
EPCP3L2.5	30	98.70 x 83 x 1.5	CP3L2.5 Series
EPCP4LG2.5	30	118.6 x 93 x 1.5	CP4LG2.5
EPCP1.5	50	26.35 x 45.3 x 1.5	CP1.5 / CPG1.5
EPCP1.5/3	50	26.35 x 54.4 x 1.5	CP1.5/3 / CPG1.5/3
EPCP1.5/4	50	26.35 x 63.5 x 1.5	CP1.5/4 / CPG1.5/4
EPCPDL1.5	50	37.55 x 67.2 x 1.5	CPDL1.5 Series
EPCPDLK2.5	50	107 x 38.1 x 1.5	CPDLK2.5 Series
EPCPPT2.5/3	50	79.8 x 40.3 x 1.5	CPPT & CPST Series
EPCPPT2.5/3	50	96.5 x 40.3 x 1.5	CPPT & CPST Series
EPCYDL2.5/4	50	58.1 x 69.5 x 1.5	CYDL Series
RBCP8L32	50	59.5 x 35.8 x 8.1	CP8L32 & CP8L32(I.S)

PARTITION & SEPARATOR PLATES

PARTITION PLATES

Partition Plates are used to segregate different groups of Terminal Blocks and provide the required creepage and clearance values in an assembly. Partition Plates electrically isolate adjacent shorting links. They also provide a separation between Terminal Blocks of different potentials.

For visual separation of different circuits, a choice of coloured End Plates and Partition Plates are also available.

Part No.	Std. Pack	Dimension (H x W x T)	Suitable for
PP2.5/4UN	50	37 x 44 x 1.6	CTS2.5UN/2.5UE/4UN/CTT2.5UK/T/J/E
PP6/10U	50	37.5 x 56 x 1.5	CTS6U/CTS10U
PP25UN	50	42.5 x 62 x 1	CTS25UN
PP35UN	50	50 x 64.5 x 1	CTS35UN
PPCMT4	50	32 x 37 x 1.6	CMT4
PPCSFL4U	50	42.5 x 62 x 1.5	CSFL4U/4U(L)/CSDL4U
CTSPP01	50	43.5 x 49 x 2.3	CTS2.5(M)
CTSPP1L	50	63 x 40 x 2.8	CTS2.5/6/10/4SC/6SC
CTSPP1B	50	60 x 55 x 3	CTS2.5/6/10/4SC/6SC
CTSPP2	50	66.5 x 66 x 3	CTS16
CTSPP3	25	59 x 67.5 x 3	CTS35
CTSPP1SC	50	48 x 60 x 3	CTS10SC
CMSTPP	50	23 x 27 x 1.5	CMST1/CMST2
CSTSPP	20	53 x 60 x 3	CSTSB3/B4/B5/N4/N5/N4(15)/N5(15)/N6
EP4P	10	70 x 160 x 2	CTS35L/70L/95L/35LS/70LS/95LS
CTSEP4	50	5 x 120 x 2.5	CTS35L/70L/35LS/70LS
PPCBB	10	45 x 120 x 2	CBB35/50 / CBB70 / CBB95
PPCBB1	10	65 x 180 x 2	CBB120 / CBB150 / CBB185
PPCX4	50	42.4 x 59 x 2	CX2.5 / CXG2.5 / CX4 / CXG4
PPCX4/3	50	42.4 x 74.7 x 2	CX2.5/3 / CXG2.5/3 / CXK2.5 / CXK4/3 / CXK4
PPCX4/4	50	42.4 x 95 x 2	CX2.5/4 / CXG2.5/4 / CX4/4 / CXK4/4
PPCX10	20	53.5 x 76 x 2	CX6 / CX10
PPCYDL2.5/4	20	70.1 x 79.5 x 2	CYDL Series


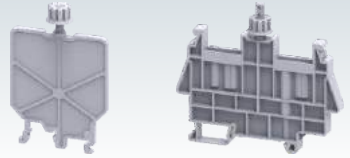
SEPARATOR PLATES

Separator Plates are used for electrical separation of adjacent shorting links without the use of additional space. They can be inserted after the Terminal Blocks have been assembled on the DIN rail.

Part No.	Std. Pack	Dimension (H x W x T)	Suitable for
SP2.5/4UN	100	17.5 x 17.4 x 1.4	CTS2.5UN/2.5UE/4UN/CTT2.5UK/T/J/E
SP6/10U	100	15.4 x 16.2 x 1.5	CTS6U/CTS10U/CTS16U
SPCDL4U	100	15.4 x 16.2 x 1.6	CDL4U/4UN/CDL4U(I.S)/4UN(I.S)
SPCMB4	100	14.5 x 12 x 1.5	CMB4
SPCDLG2.5	100	11 x 10.5 x 1	CDGL2.5
SPCP8L32	10	83.2 x 120 x 3.5	CP8L32 & CP8L32(I.S)

PROTECTIVE COVERS

For protection against dust and shock, transparent protective covers can be installed above the Terminal Block assembly. The protective cover is held in place with the help of a fixing nut on the support plate CSP1. Support Plate CSP1 can be mounted on all DIN rails. It is advised to use standard end clamps / stops to hold the CSP1 in place.

Protective Covers			Support Plate	
				
Part No.	Length	Std. Pack	Part No.	Std. Pack
CTSPC(40mm)	40 mm	10	CSP1	100
CTSPC(90mm)	90 mm	10	CSP2	100
CTSPC(100mm)	100 mm	10		
CTSPC(130mm)	130 mm	10		
CTSPC(150mm)	150 mm	10		
CTSPC(200mm)	200 mm	10		
CTSPC(240mm)	240 mm	10		
CTSPC(300mm)	300 mm	10		
CTSPC(330mm)	330 mm	10		
CTSPC(430mm)	430 mm	10		
CTSPC(460mm)	460 mm	10		
CTSPC(760mm)	760 mm	10		

